



YOUR LIFESTYLE
REDEFINED.

The evolution of Rosewood Communities continues.

Ridgestone
COTTAGES
PHASE TWO



Expect no
less, inside.

All Rosewood Cottages come with granite countertops, stone fireplaces with cedar mantles, 9-foot ceilings, and ceramic floors in all wet areas.

With our upgrades such as quartz countertops, smart home features and retractable screens, we can make your dream home come to life inside and out.



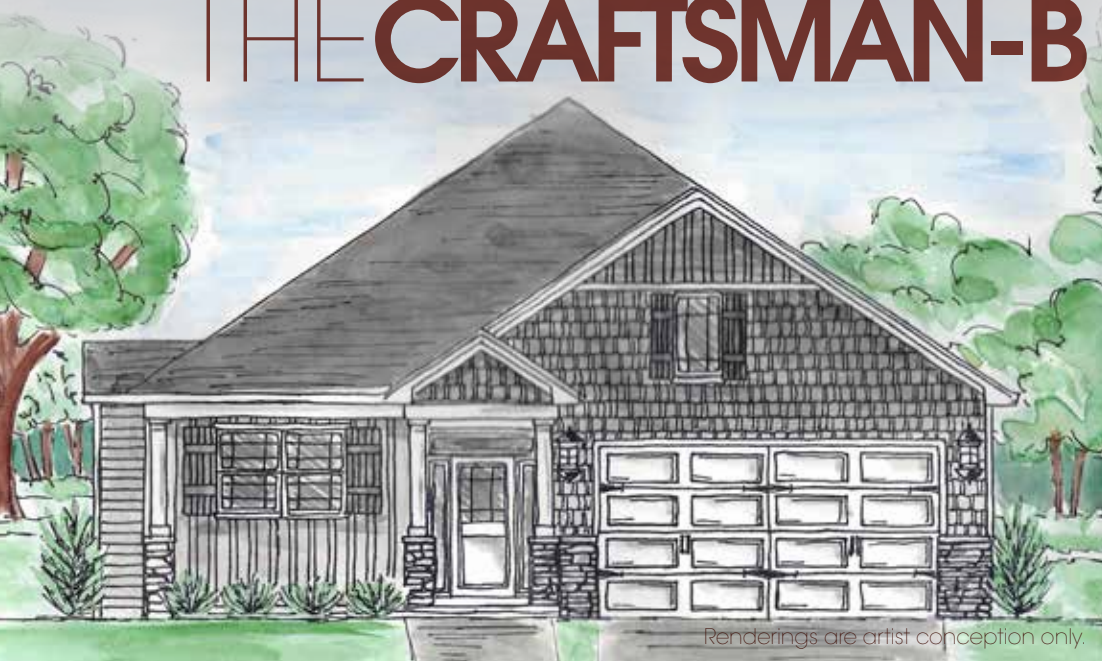


OUTDOOR FEATURES



OUTDOOR FEATURES

/COTTAGE SERIES THE CRAFTSMAN-B



Renderings are artist conception only.

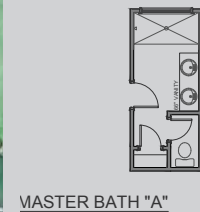
1566 SQ.FT.

+290 SQ.FT. UNFINISHED 2ND FLOOR

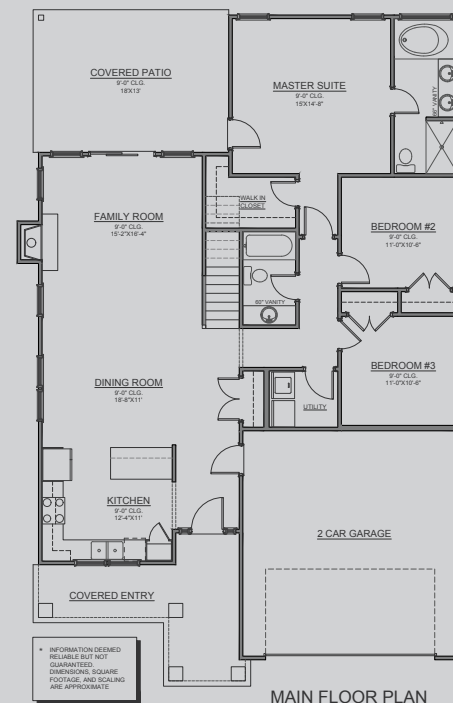
3 BED // 2 BATH

Renderings are artist conception only.

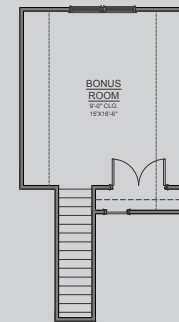
Open dining and living room and huge patio. Master Suite and two bedrooms on the main floor with optional finished bonus room.



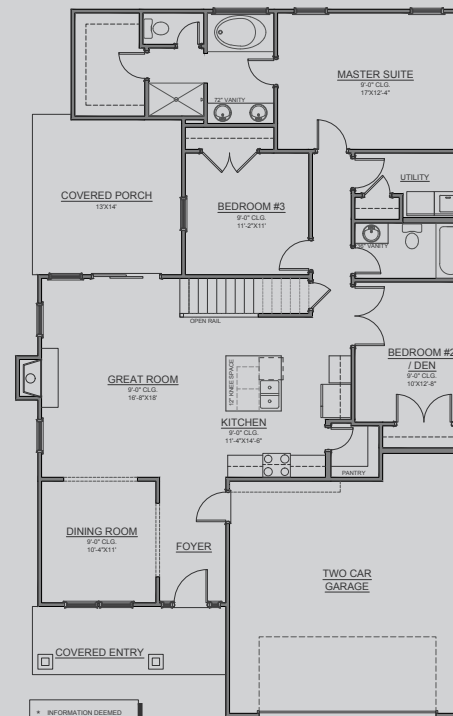
MASTER BATH "A"



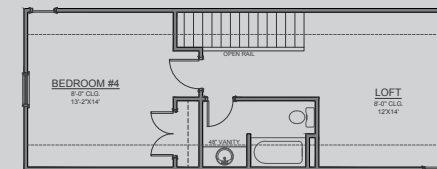
MAIN FLOOR PLAN



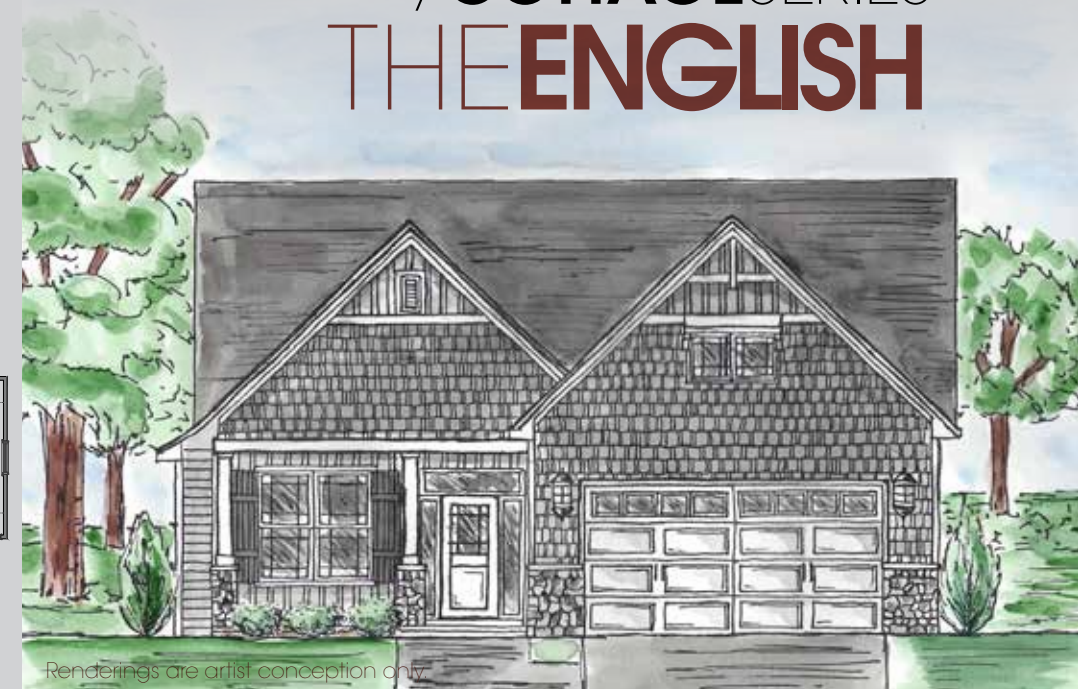
UPPER FLOOR PLAN



MAIN FLOOR PLAN



UPPER FLOOR PLAN



Renderings are artist conception only.

2168 SQ.FT.

4 BED // 3 BATH

Renderings are artist conception only.

Master suite and 2 bedrooms on the main floor, with an optional bedroom, bath and bonus room on the finished 2nd floor.

/COTTAGE SERIES THE MOUNTAIN-A



2199 SQ.FT.
4 BED // 3 BATH

Master suite, 2 bedrooms and front kitchen on the main floor, with an optional bedroom, bath and bonus room on the finished 2nd floor.

Renderings are artist conception only.



/COTTAGE SERIES THE MOUNTAIN-B



2199 SQ.FT.
4 BED // 3 BATH

Master suite and 2 bedrooms on the main floor, with an optional bedroom, bath and bonus room on the finished 2nd floor.

Renderings are artist conception only.

/COTTAGE SERIES THE PORTLAND-A



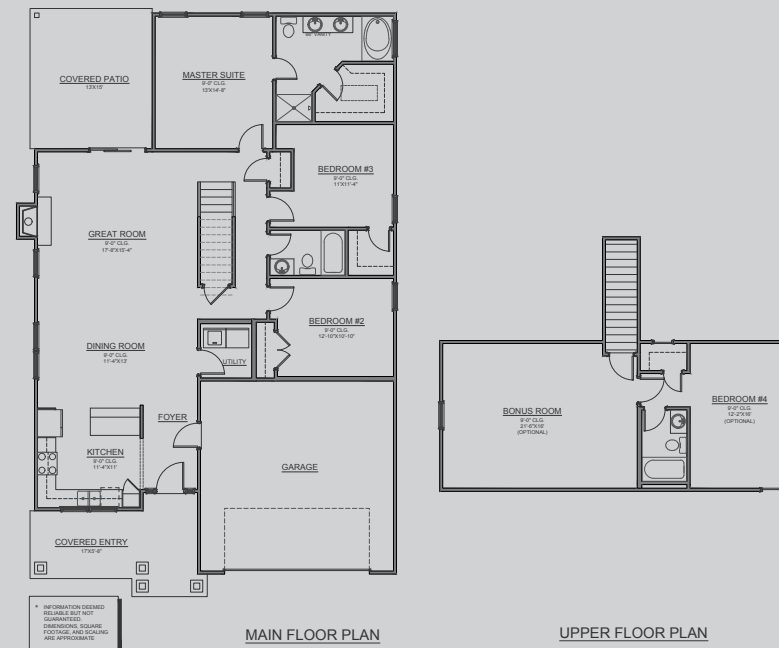
1690 SQ.FT.

+663 SQ.FT. OPTIONAL 2ND FLOOR

4 BED // 3 BATH

Renderings are artist conception only.

Master suite and two bedrooms on the main floor, with optional bonus room, bedroom and bath on the finished 2nd floor.



/COTTAGE SERIES THE PORTLAND-B



1690 SQ.FT.

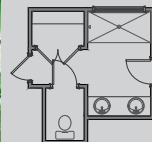
+663 SQ.FT. OPTIONAL 2ND FLOOR

4 BED // 3 BATH

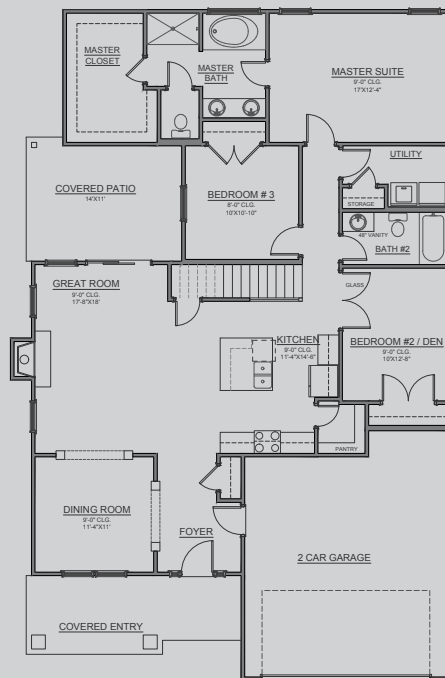
Renderings are artist conception only.

Master suite, two bedrooms and front kitchen on the main floor with optional bonus room, bedroom and bath on the finished 2nd floor.

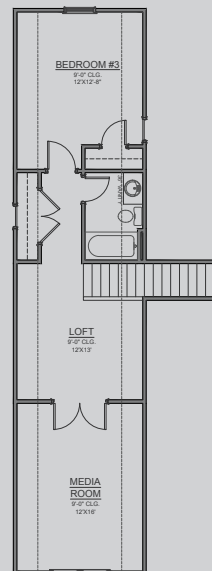
/COTTAGE SERIES THE SKANDIA



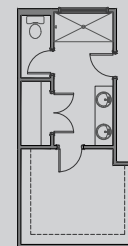
MASTER BATH
OPTION "A"



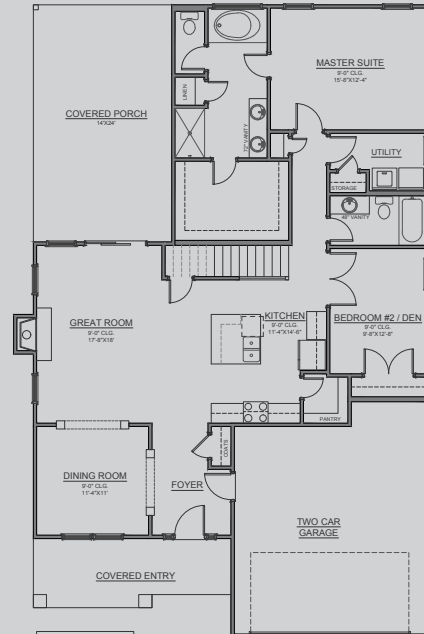
MAIN FLOOR PLAN



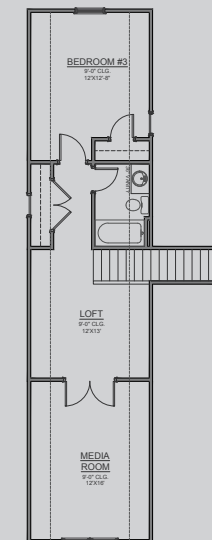
UPPER FLOOR PLAN



MASTER BATH
OPTION "A"



MAIN FLOOR PLAN



UPPER FLOOR PLAN

1729 SQ.FT.

+665 SQ.FT. OPTIONAL 2ND FLOOR

4 BED // 3 BATH

Master suite and 2 bedrooms on the main floor, with an optional bedroom, bath, loft and media room on the finished 2nd floor.

Renderings are artist conception only.

/COTTAGE SERIES THE SKANDIA-B



2254 SQ.FT.

3 BED // 3 BATH

Master suite, bedroom and extra large outdoor living area on the main floor, with a bedroom, bath, loft and media room on the finished 2nd floor.

Renderings are artist conception only.

/COTTAGE SERIES THE CANYON



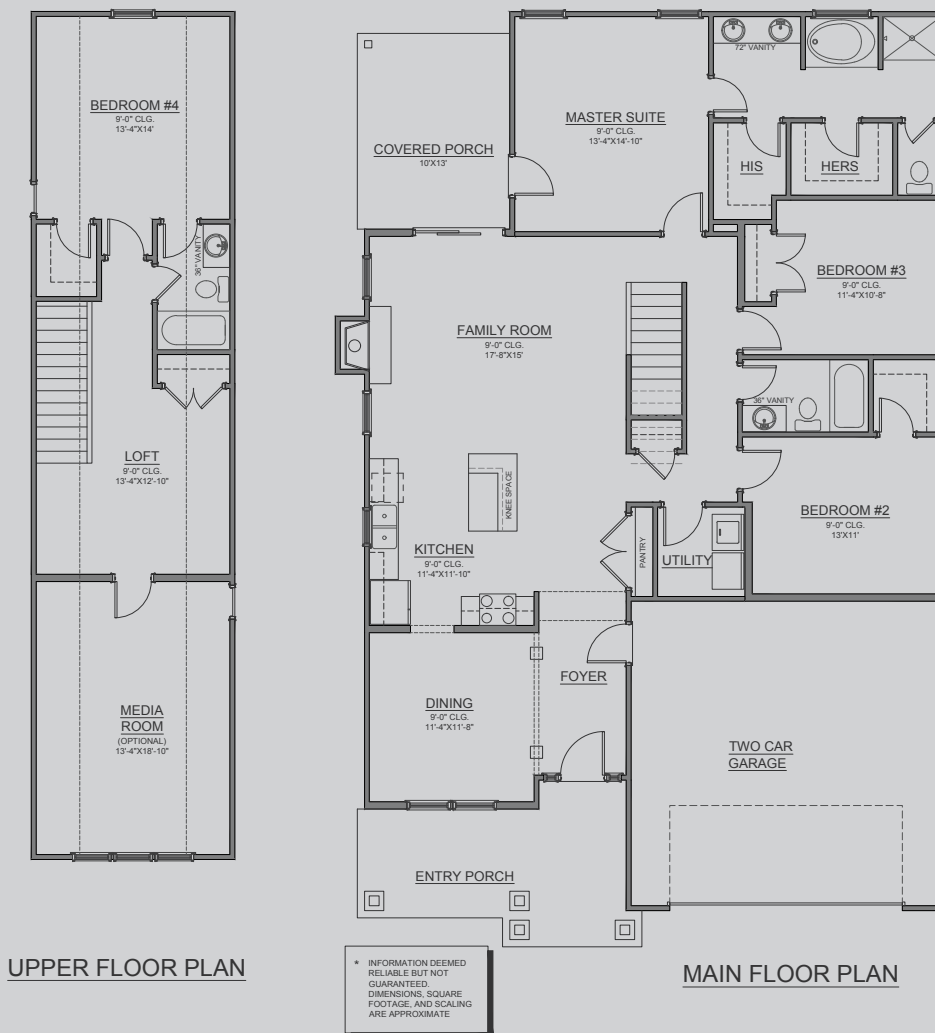
1735 SQ.FT.

+777 SQ.FT. OPTIONAL 2ND FLOOR

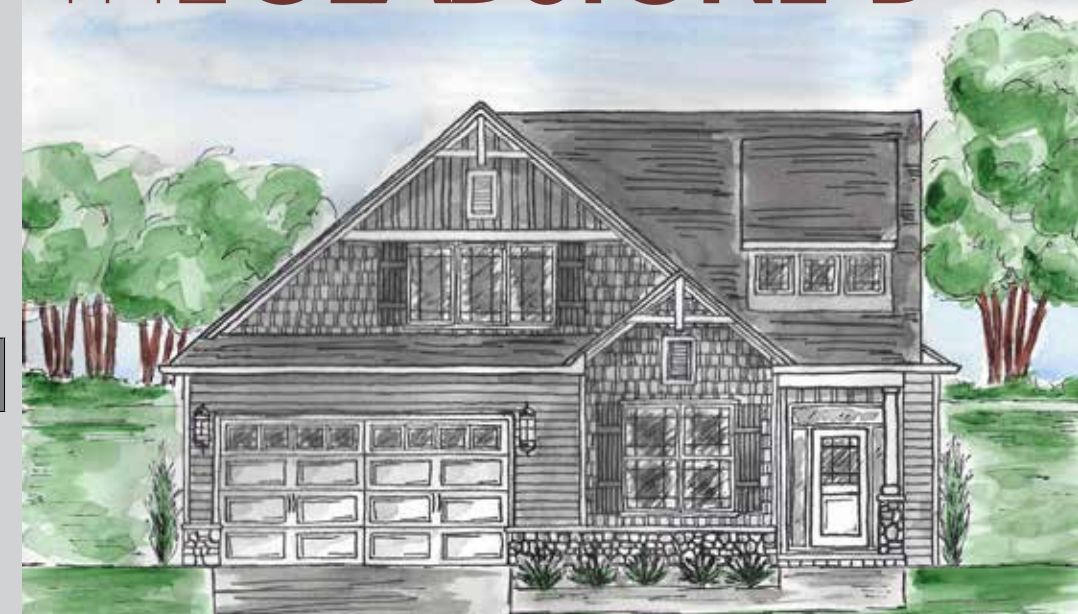
4 BED // 3 BATH

Renderings are artist conception only.

Master suite and 2 bedrooms on the main floor, with a bedroom, bath, loft and bonus room on the finished 2nd floor.



/COTTAGE SERIES THE GLADSTONE-B



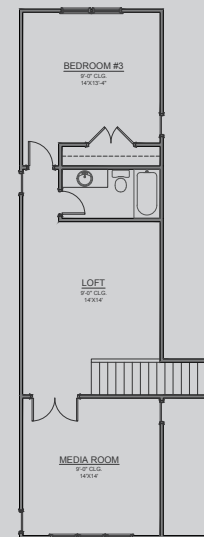
2271 SQ.FT.

3 BED // 3 BATH

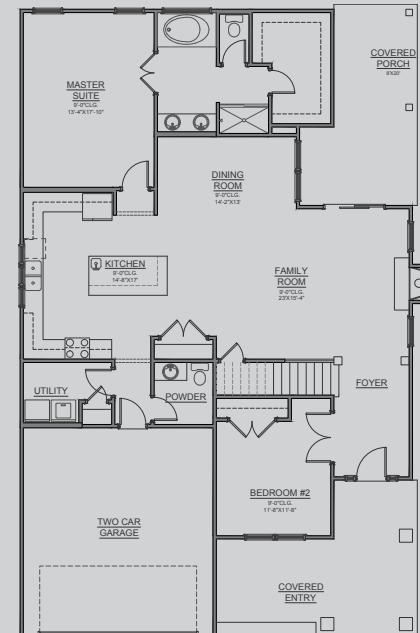
Renderings are artist conception only.

Master suite and bedroom on the main floor, with a bedroom, bath, loft and bonus room on the 2nd floor.

/COTTAGE SERIES THE EDMUND

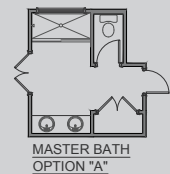


UPPER FLOOR PLAN

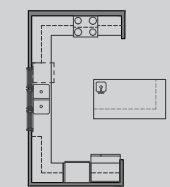


MAIN FLOOR PLAN

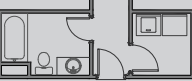
* INFORMATION DEEMED
RELIABLE BUT NOT
GUARANTEED.
DIMENSIONS, SQUARE
FOOTAGE, AND SCALING
ARE APPROXIMATE.



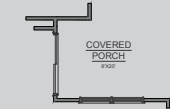
MASTER BATH
OPTION "A"



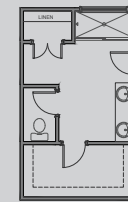
KITCHEN
OPTION "A"



UTILITY / GUEST BATH
OPTION "A"



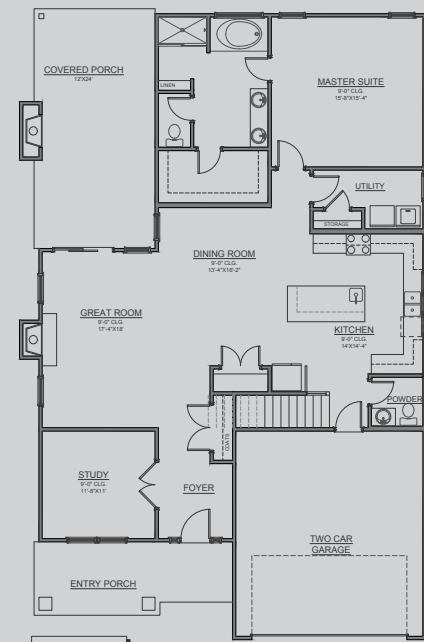
SLIDER RELOCATION
OPTION



MASTER BATH
OPTION "A"

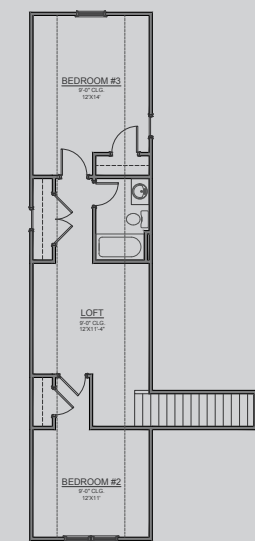


KITCHEN
OPTION "A"



MAIN FLOOR PLAN

* INFORMATION DEEMED
RELIABLE BUT NOT
GUARANTEED.
DIMENSIONS, SQUARE
FOOTAGE, AND SCALING
ARE APPROXIMATE.



UPPER FLOOR PLAN

/COTTAGE SERIES THE NORDEA



2477 SQ.FT.

3 BED // 2.5 BATH

Renderings are artist conception only.

Master suite and
bedroom on the main
floor with a bedroom,
bath, loft and media
room on the 2nd floor.

2336 SQ.FT.

3 BED // 2.5 BATH

Renderings are artist conception only.

Master suite, bedroom and
extra large outdoor living
area on the main floor, with
2 bedrooms, loft and a
bath on the 2nd floor.

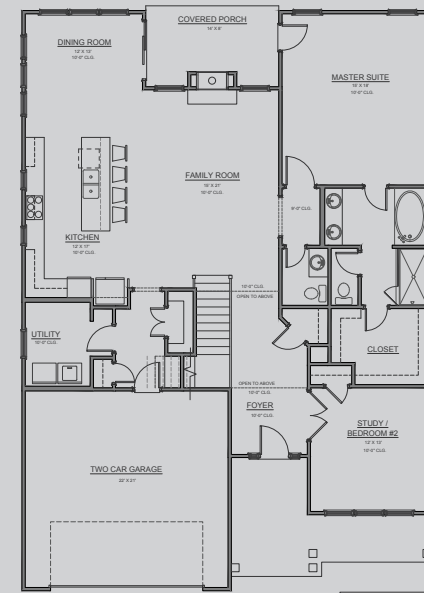
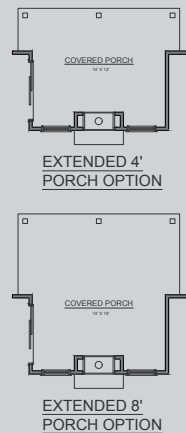
/COTTAGE SERIES THE AURORA



2685 SQ.FT.
4 BED // 2.5 BATH

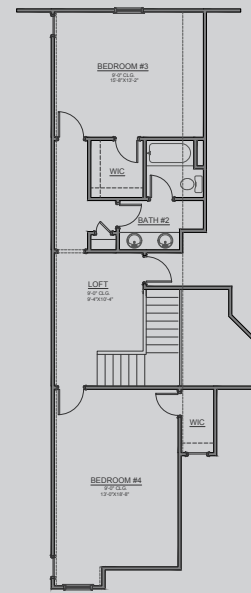
Renderings are artist conception only.

Master suite, huge great room and open floorplan with optional see through fire place and 10 ft. ceilings on the main floor with 2 bedrooms, bath, and loft on the 2nd floor.

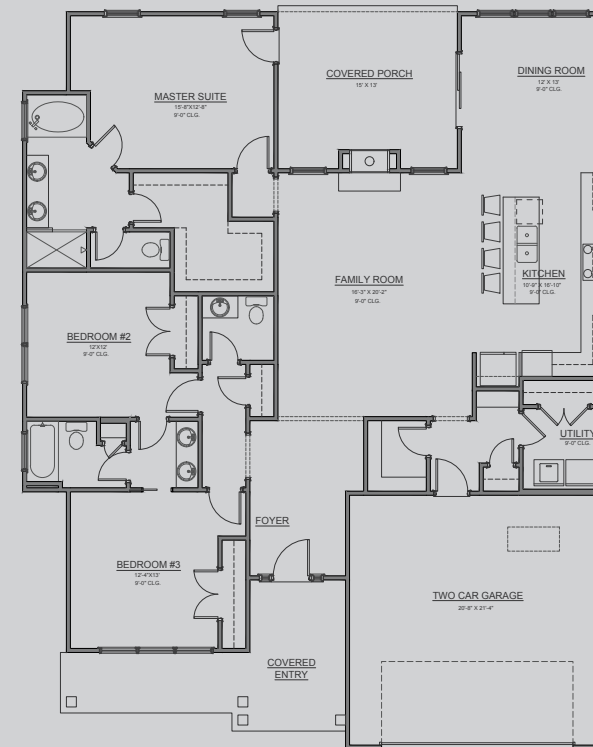


MAIN FLOOR PLAN

* INFORMATION DEEMED RELIABLE BUT NOT GUARANTEED. DIMENSIONS, SQUARE FOOTAGE, AND SCALING ARE APPROXIMATE.

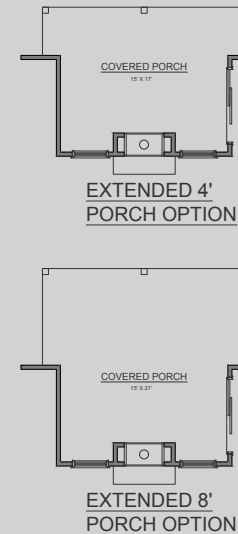


UPPER FLOOR PLAN



MAIN FLOOR PLAN

* INFORMATION DEEMED RELIABLE BUT NOT GUARANTEED. DIMENSIONS, SQUARE FOOTAGE, AND SCALING ARE APPROXIMATE.



/COTTAGE SERIES THE AURORA-B

2008 SQ.FT.
3 BED // 2.5 BATH

Renderings are artist conception only.

Master suite, 2 additional bedrooms, open floorplan with an optional see through fireplace and huge covered patio all on one level.

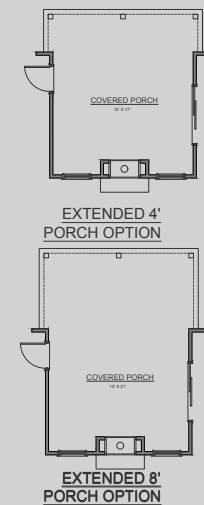
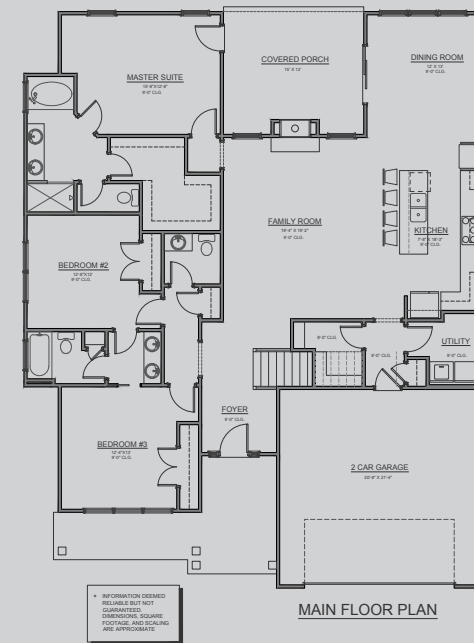
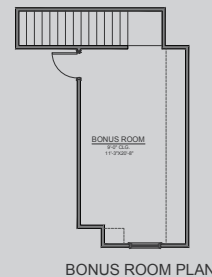
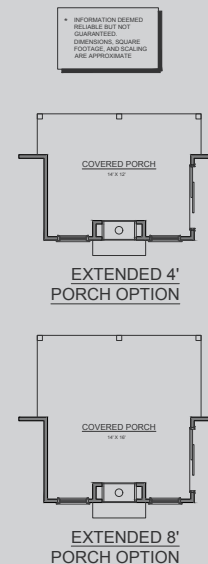
/COTTAGE SERIES THE AURORA-C



2122 SQ.FT.
3 BED // 2 BATH

Renderings are artist conception only.

Master suite, one additional bedroom, open floor plan with an optional see through fireplace, huge covered patio, with a third bedroom upstairs.



2258 SQ.FT.
3 BED // 2.5 BATH

Renderings are artist conception only.

Master suite, 2 additional bedrooms, open floorplan with an optional see through fireplace and huge covered patio all on one level.

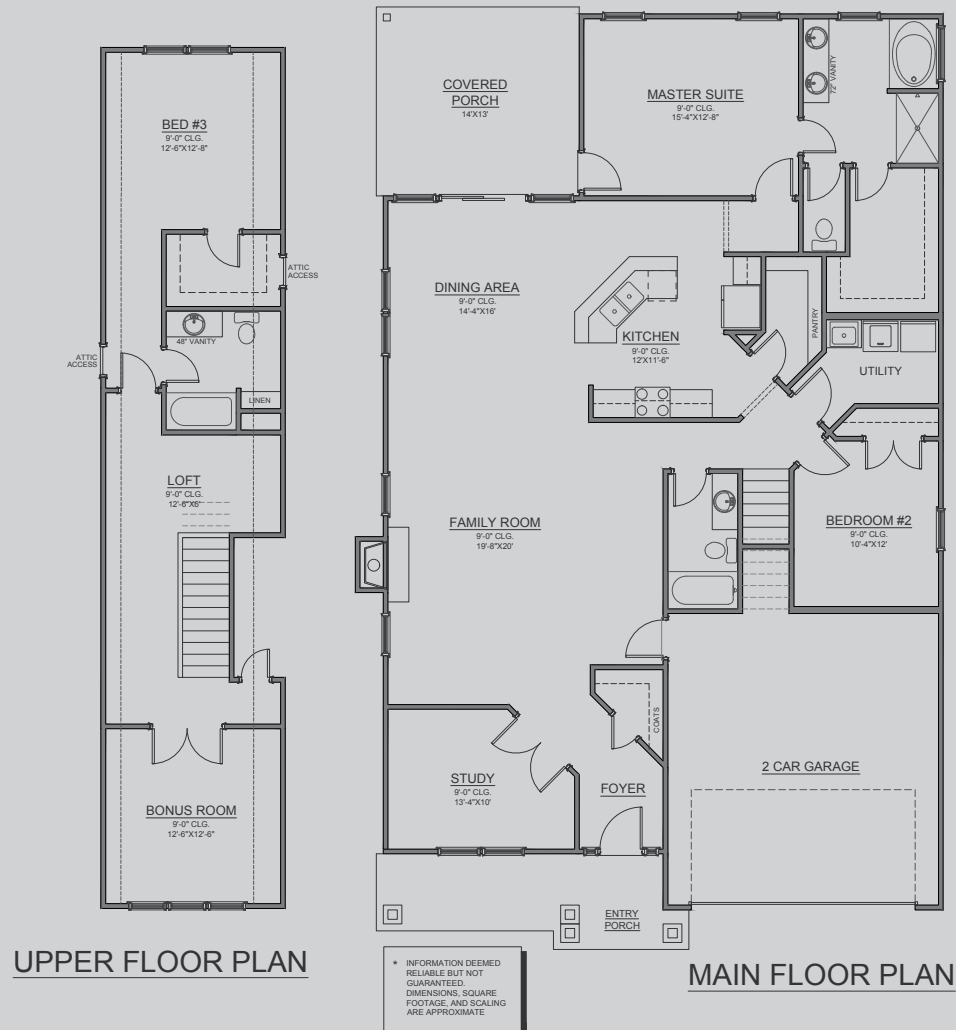
/COTTAGE SERIES THE RIVERSIDE



2618 SQ.FT.
3 BED // 3 BATH

Master suite and additional bedroom on the main floor, with a bedroom, bath, loft and bonus room on the 2nd floor.

Renderings are artist conception only.



/COTTAGE SERIES THE RIVERSIDE-C



2618 SQ.FT.
3 BED // 3 BATH

Master suite and bedroom on the main floor, with a bedroom, bath, loft and bonus room on the 2nd floor.

Renderings are artist conception only.

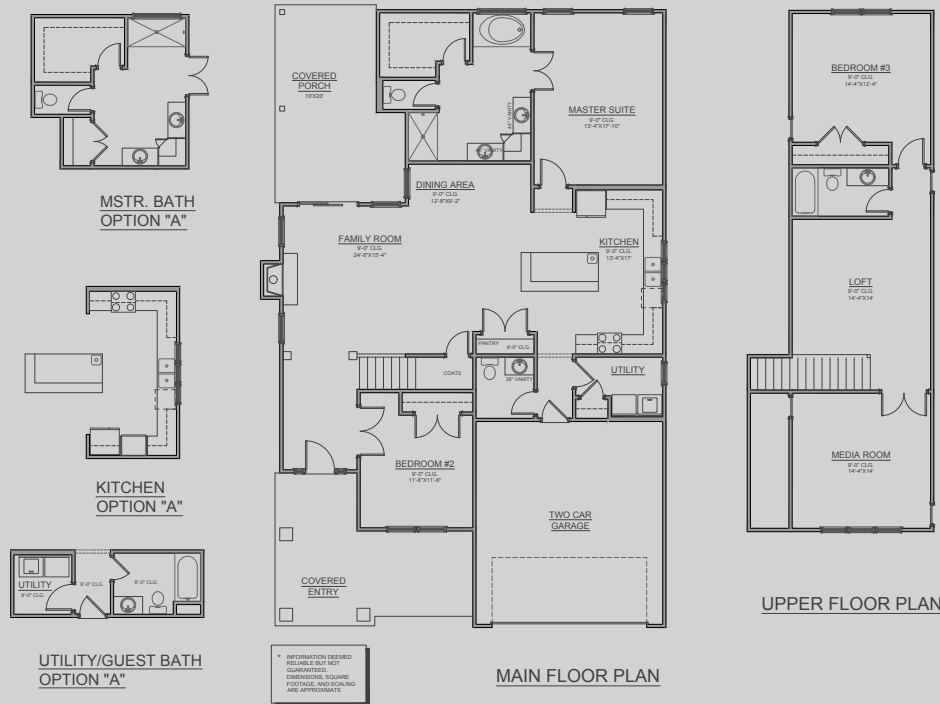
/COTTAGE SERIES THE BOTNIA



2452 SQ.FT.
3 BED // 2.5 BATH

Renderings are artist conception only.

Master suite, bedroom and open floorplan on the main floor with a bedroom, bath, loft and media room on the 2nd floor.



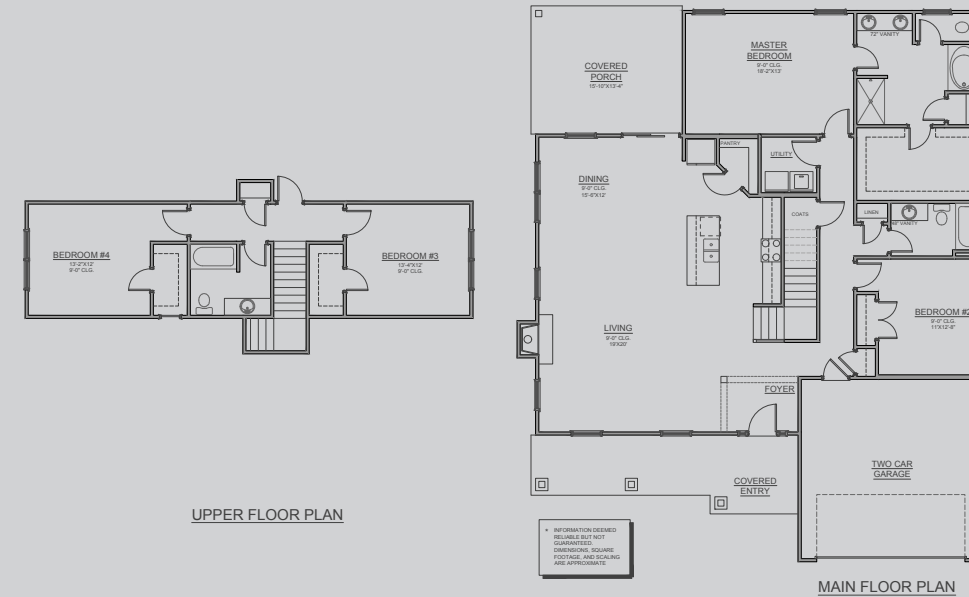
/COTTAGE SERIES THE COLBURN



2486 SQ.FT.
4 BED // 3 BATH

Renderings are artist conception only.

Master suite and additional bedroom with open floorplan, and 9 ft. ceilings on the main floor with 2 bedrooms and one bath on the 2nd floor.



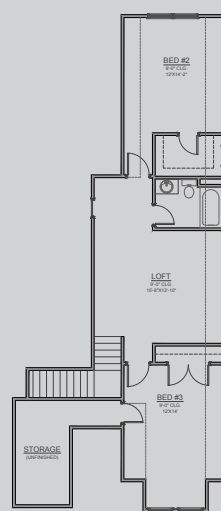
/COTTAGE SERIES THE BALTIC



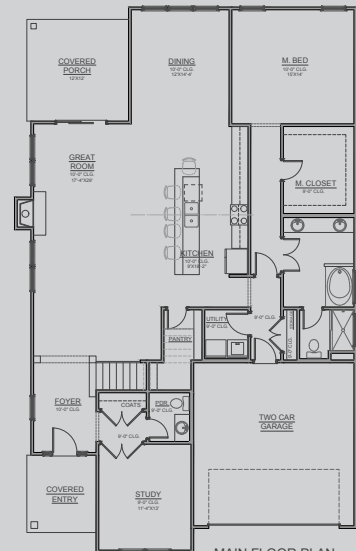
2773 SQ.FT.
3 BED // 2.5 BATH

Renderings are artist conception only.

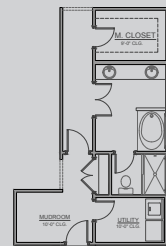
Master suite, huge great room and open floorplan with 10 ft. ceilings on the main floor with 2 bedrooms, bath, and loft on the 2nd floor.



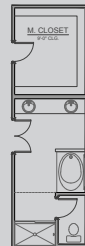
UPPER FLOOR PLAN



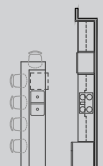
MAIN FLOOR PLAN



MUDROOM OPTION

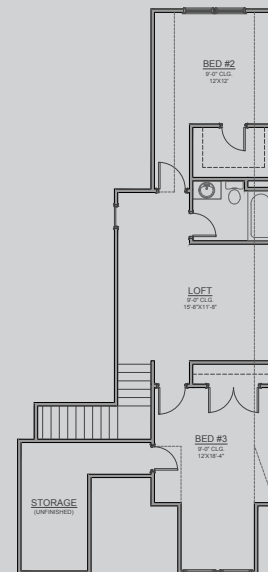


MSTR. BATH
OPTION "A"

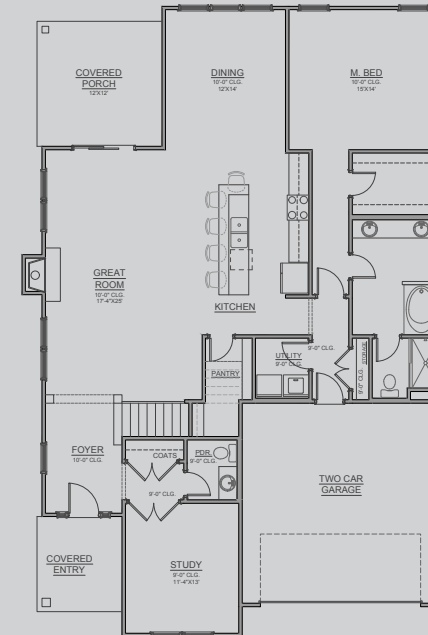


KITCHEN
OPTION "A"

* ALL DIMENSIONS SHOWN ARE APPROXIMATE. DIMENSIONS, SQUARE FOOTAGE, AND SCALING ARE APPROXIMATE.

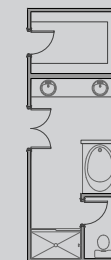


UPPER FLOOR PLAN

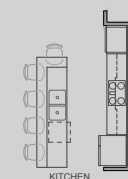


MAIN FLOOR PLAN

* INFORMATION DEEMED RELIABLE BUT NOT GUARANTEED. DIMENSIONS, SQUARE FOOTAGE, AND SCALING ARE APPROXIMATE.

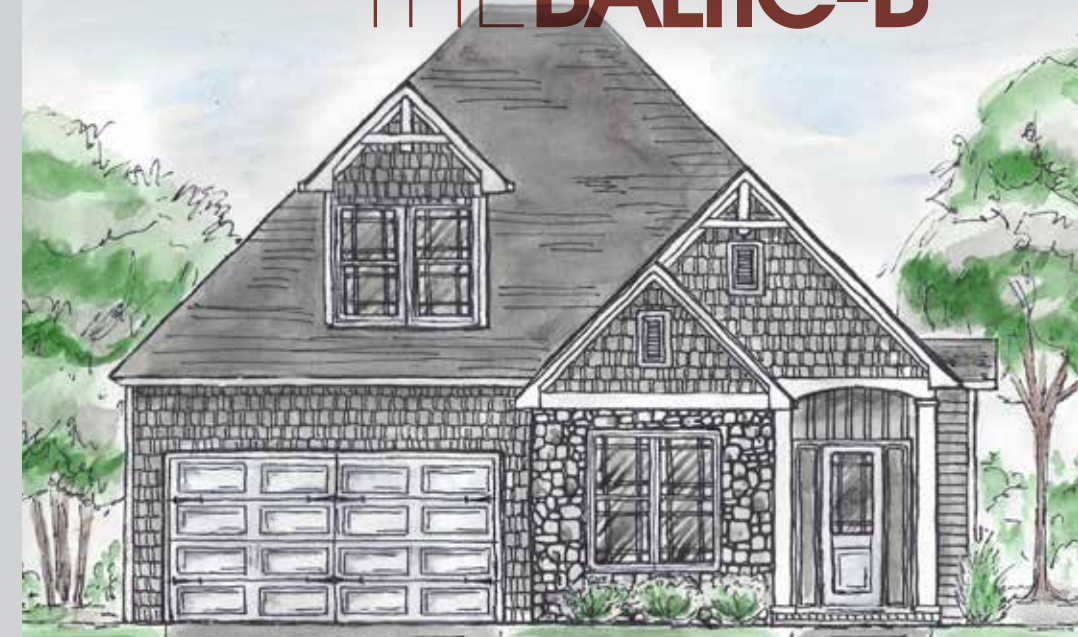


MSTR. BATH
OPTION "A"



KITCHEN
OPTION "A"

/COTTAGE SERIES THE BALTIC-B



2546 SQ.FT.
3 BED // 2.5 BATH

Renderings are artist conception only.

Master suite, huge great room and open floorplan with 10 ft. ceilings on the main floor with 2 bedrooms, bath, and loft on the 2nd floor.

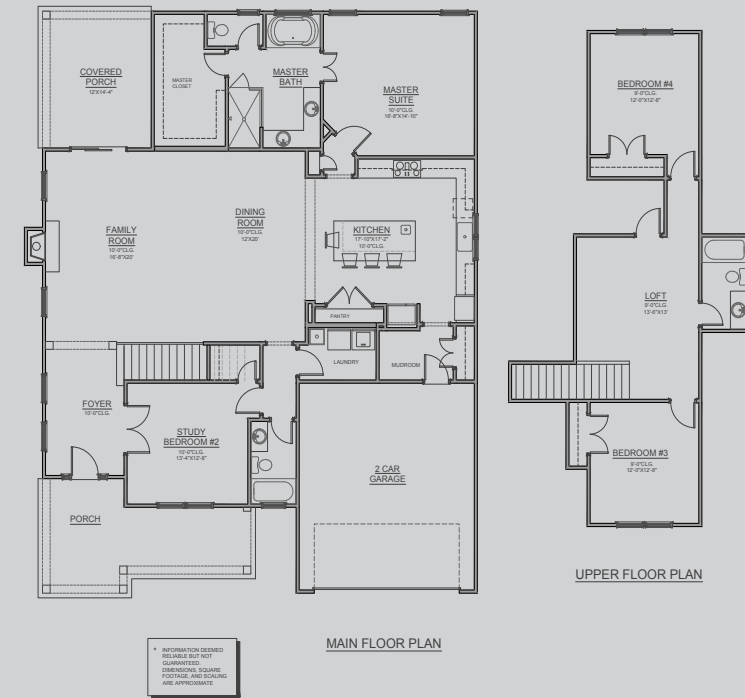
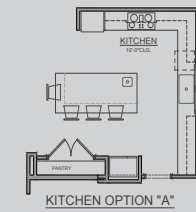
/COTTAGE SERIES THE POLAR



2446 SQ.FT.
3 BED // 3 BATH

Renderings are artist conception only.

10 ft. ceilings with master suite and additional bedroom on main with an extended covered patio. Bonus, loft, bath and third bedroom upstairs.



/COTTAGE SERIES THE BELLE VUE

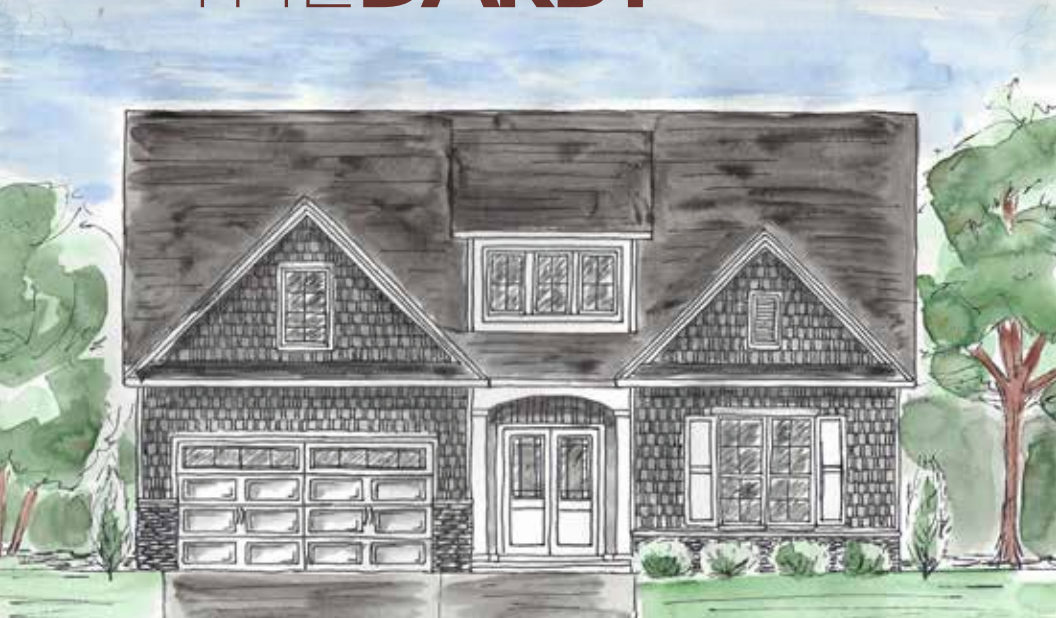


2758 SQ.FT.
4 BED // 3 BATH

Renderings are artist conception only.

Master suite with additional suite, open floorplan and 10 ft. ceilings on the main floor with 2 bedrooms, bath, and loft on the 2nd floor.

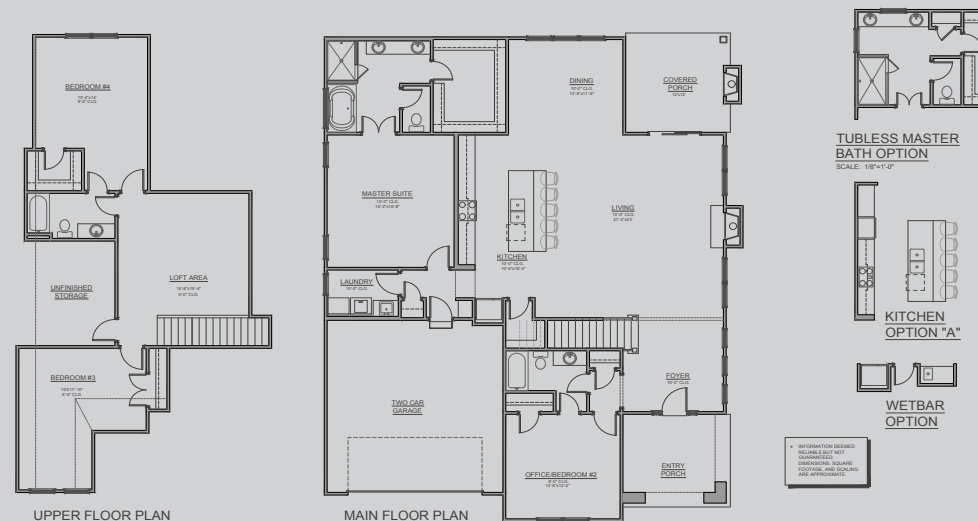
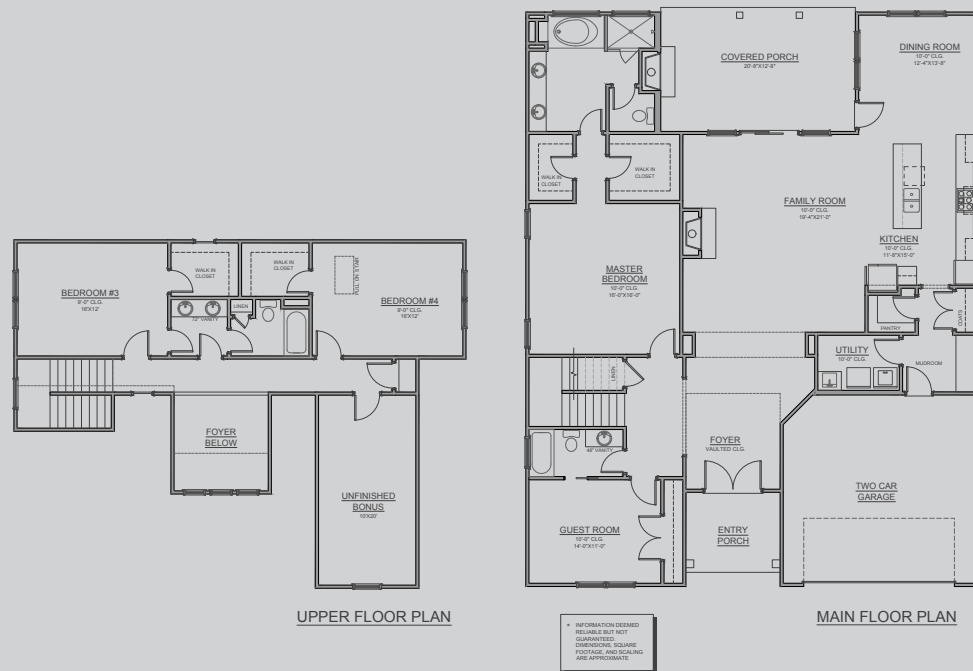
/COTTAGE SERIES THE DARBY



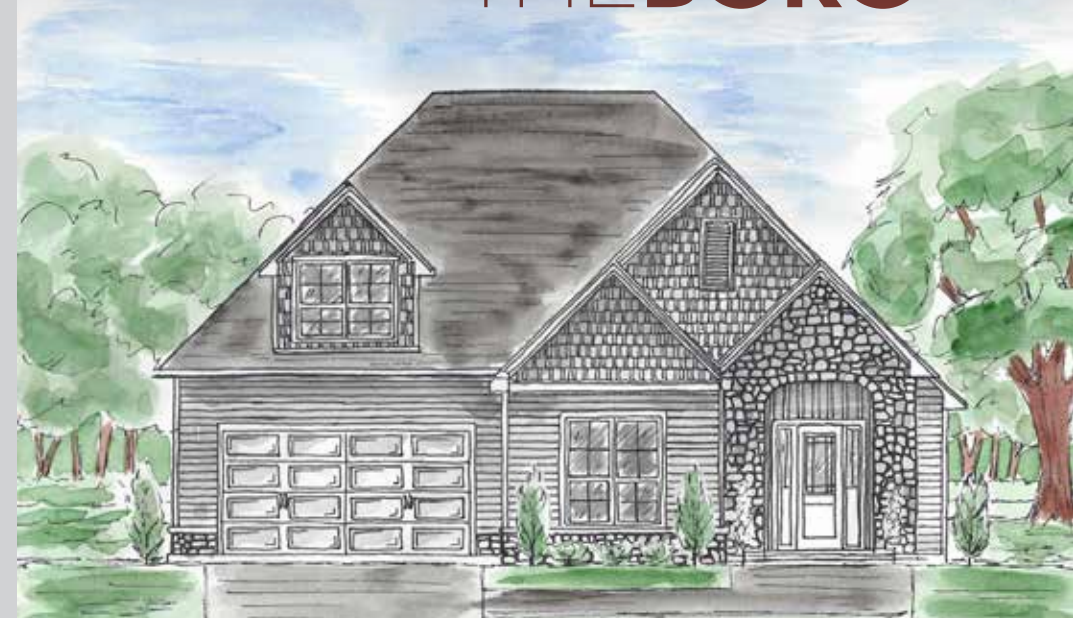
2891 SQ.FT.
4 BED // 3 BATH

Renderings are artist conception only.

Master suite and additional bedroom with open floorplan, two story foyer and 10 ft. ceilings on the main floor with 2 bedrooms, bath, and loft on the 2nd floor.



/COTTAGE SERIES THE BORG



2987 SQ.FT.
4 BED // 3 BATH

Renderings are artist conception only.

Master suite, additional bedroom and open floorplan with 10 ft. ceilings on the main floor with 2 bedrooms, bath, and huge loft on the 2nd floor.

Interior Features

- ❖ 4-5 ft ceramic shower and floors in master bath
- ❖ Shower door in master bath
- ❖ Garden tub
- ❖ Ceramic floors in laundry and baths
- ❖ Prairie-style Elite® series interior doors
- ❖ 9 and 10 ft high ceilings
- ❖ GFCI protection outlet in baths, kitchens, and laundry rooms
- ❖ All cottages are prepped for security system and are smart home ready
- ❖ Knock down decorative brocaded ceiling
- ❖ 50 gallon quick recovery gas hot water heater
- ❖ Smoke / Carbon Monoxide detectors
- ❖ Crown molding in kitchen, dining, family room & foyer
- ❖ Hardwood flooring in kitchen, dining, family room & foyer

Kitchen

- ❖ Granite countertops
- ❖ Smooth top, self-cleaning oven
- ❖ Microwave/hood fan combo
- ❖ Dishwasher
- ❖ Garbage disposal
- ❖ Ice maker hookup for refrigerator
- ❖ Double stainless steel kitchen sink with vegetable sprayer
- ❖ Designer flat panel cabinets with crown molding
- ❖ 42” Mid Continent upper cabinets - “Adams”
- ❖ Wastebasket in cabinet
- ❖ Stainless appliances

- ❖ Vented fireplace with gas logs and stone accents
- ❖ Cedar mantle over fireplace (dark stain)
- ❖ Cabinet over refrigerator
- ❖ 6” craftsman baseboards through out entire house (8” in 10’ ceiling plans)
- ❖ Wire shelving in all closets
- ❖ Can lights in kitchen
- ❖ 36” high vanities
- ❖ Cultured marble tops in baths
- ❖ Decorative staircase railing

Roof

- ❖ 2x4 engineered trusses
- ❖ 15 LB felt underlay
- ❖ Ridge venting on roofs
- ❖ 30 year architectural grade shingles
- ❖ Sheathing 7/16’ OSB board with roof clips @ 2’ on center

Craftsman Style Exterior/Features

- ❖ Lushly landscaped irrigated maintenance-free yards
- ❖ Carriage style garage doors
- ❖ YALE® dead bolt locks on exterior doors
- ❖ Sheetrocked, painted, finished garage interior
- ❖ Energy efficient insulation – R-30 ceiling, R-13 walls
- ❖ Insulated exterior doors
- ❖ Energy efficient double pane vinyl windows, single hung with grids
- ❖ Gutters, soffits, and downspouts prefinished to match trim
- ❖ Craftsman style Portrait® series fiberglass front door with leaded glass
- ❖ Covered porches
- ❖ Fiber cement siding with stone and shake detail

Electrical

- ❖ 200 amp electrical circuit breaker panel
- ❖ Doorbell at front entry
- ❖ 2 exterior weatherproof electrical receptacle (Front & Rear)
- ❖ 2 ceiling fans, one in great room & one in master bedroom
- ❖ Cable TV pre-wire in every bedroom & in main living area
- ❖ Phone outlet in every bedroom & in main living area
- ❖ Garage door openers
- ❖ Garage keypads

Plumbing / Mechanical

- ❖ HVAC – Energy Efficient sealed & pressure-tested duct system with zone system and programmable thermostat
- ❖ PVC sewer lines
- ❖ Wirsbo water line
- ❖ MOEN™ plumbing fixtures
- ❖ 2 exterior hose bibs
- ❖ Raised elongated toilets

PLUMBING & HVAC

	PRICE
Super-efficient HVAC	\$3500 (single)
Tankless water heater (waterline looped for future recirculating pump)	\$2150
Recirculation pump for hot water heater	\$850
Upgraded plumbing options are available	

ELECTRICAL

Additional cable, phone, electrical outlet	\$75 each
Additional weatherproof outlet	\$150 each
Additional ceiling fan	\$300 each
Dimmer switch	\$75 each
Switched Outlet	\$150
Ceiling fan prewire (includes switch)	\$150 each
Additional can Lighting	\$100 each
Ceiling fan on porch	\$300
Floor outlets in concrete	\$400
Under cabinet lighting	\$850
LED Light Bulb Package (except fluorescent lighting)	\$780
Decora Style switches	\$900
Upgraded lighting options are available	

PRICED PER PLAN

Adorne under cabinet modular strips (includes 1 USB & 1 iPad holder)
All Audio, visual, and security system options
Extra concrete pad off patio
Additional hardwoods
Tile backsplash in kitchen

APPLIANCES

	PRICE
Gas line to stove with electrical	\$600
Gas line to dryer	\$600
Gas line to grill	\$600
Microwave vented to outside	\$600

CABINETS

Cabinets over washer & dryer	\$1500
Upgraded Cabinets (Parker)	\$1000
Upgraded Cabinets (Burke)	\$1500
Upgraded Cabinets (Towne)	\$1500
Upgraded Cabinets (Copenhagen)	\$2000
Upgraded Cabinets (Dalton)	\$2000
Designer Series Painted Cabinets (cost in addition to cabinet style)	\$1500
Designer line Granite Tops in kitchen	\$2000
Quartz Tops in kitchen	\$3500
Glazed cabinet options available in design center	

BATHROOM & LAUNDRY

Upgraded colored marble tops in master	\$600
Upgraded colored marble tops in guest	\$450 each
Granite tops in master	\$1250
Granite tops in guest	\$950 each
Free-standing laundry sink	\$1000
Shower Handrail	\$250
Frameless shower door	\$1800
Stainless or ORB shower door for secondary bathrooms	\$1000
Venetian marble tops with white wave sink in master	\$800
Venetian marble tops with white wave sink in guest baths	\$600

MISCELLANEOUS

	PRICE
Additional single windows	\$500 each
Additional door	\$500 each
Pocket door	\$800 each
Door Levers	\$500
Central vacuum system	\$1800
Upgraded central vac system	\$4000
Kitchen vac unit (only with system)	\$350
Screen patio	\$3000
Upgraded carpet	\$1000
8-pound pad	\$500
Radiant Barrier (OSB)	\$1075
Super Efficiency Insulation Package (R-15 in walls, R-38 in ceiling)	\$1500
Hardwood stair treads	\$3000
Exterior ventless fireplace & cultured stone mantel	\$5350
See thru fireplace for select plans	\$4800
Skylights with blinds	\$1800 each
Farmhouse kitchen sink stainless	\$1580
Farmhouse kitchen sink white	\$1980
Shower bench	\$500
4" Crown molding	\$400 per room



Only the Highest Standards

From our Craftsman Style exteriors to high ceilings and energy-efficient windows, Rosewood Communities sets the standard.

Our standards are others' upgrades.

Even the best can get better.

Upgraded cabinets, lighting and floors. Our standard features are amazing, but you can take it to the next level with our upgrades.

Your dream home awaits.



Information on this page is subject to change without notice.



ROSEWOOD
COMMUNITIES



Rosewood Communities is a proud supporter of Homes for Hope. It is our privilege to raise awareness and help in the fight against global poverty.

Learn more at
homes4hope.org



rosewoodcommunities.com | 864-430-8646



Information deemed reliable but not guaranteed. Dimensions, square footages & scaling are approximate. Some lot premiums may apply. Pricing, plan and features may change without notification.